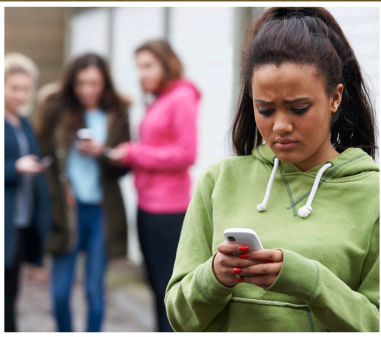




ENODO
GLOBAL



SCHOOL VIOLENCE MITIGATION PROGRAM (SVMP)

"Schools lack reliable mechanisms to identify, monitor, and address student grievances to prevent threats from manifesting into violence – ENODO fills the gap."

info@enodoglobal.com



ENODO provides **real-time awareness** and **predictive analysis** that enable stakeholders to shape student behavior and mitigate violence.

ENODO's SVMP combines Social Media Monitoring with Data-Driven Analysis and a Population-centric methodology to:



Diagnose the root causes of school violence



Reduce the number of school violence incidents and threats



Shape school culture to increase safety and improve learning environment



Increase communication and collaboration between students and other stakeholders

ENODO's multi-faceted approach offers a holistic solution that uncovers and addresses the root causes of school violence. Our **SVMP** doesn't just report threats – it **PREDICTS** and **PREVENTS** them.

Phase I

- ▶ **Customized Data Collection Platform:** Tailored to the specific school environment
- ▶ **Social Risk Analysis:** Report that uncovers key issues and associated student sentiment and pinpoints the Social Risk factors driving school violence
- ▶ **Social Media Analysis:** Report that maps the school's information environment, identifies key influencers, and measures school social media reach

Phase II

- ▶ **Social Risk Action Plan:** Uses data driven findings to design a school-specific communications strategy, optimize existing school violence prevention efforts, and provide a qualitative and quantitative baseline assessment
- ▶ **Social Media Monitoring:** Analysts actively monitor social media throughout the project to provide:
 - ▶ **Daily Reports:** Provide findings from the previous day's activities
 - ▶ **Weekly/Monthly Reports:** Compile findings and recommendations from previous week/month
 - ▶ **Emergency Reports:** Deliver immediate analysis of important events and warnings of threats
 - ▶ **Ask ENODO:** Respond to school officials' specific requests for information (RFI) within 24 hours